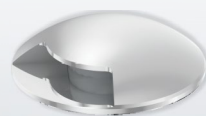
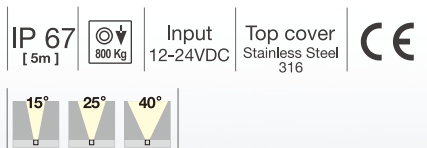


# EPO / EPO Nano

## Recessed Ground Light



EPO NANO V1



### Quickinfo

#### GENERAL

underground  
IP 67

#### LED

OSRAM LED module  
2700K, 3000K, 4000K  
CRI > 80, CRI > 90  
Bining < 3-Step MacAdam

#### ESTIMATED LED LIFETIME

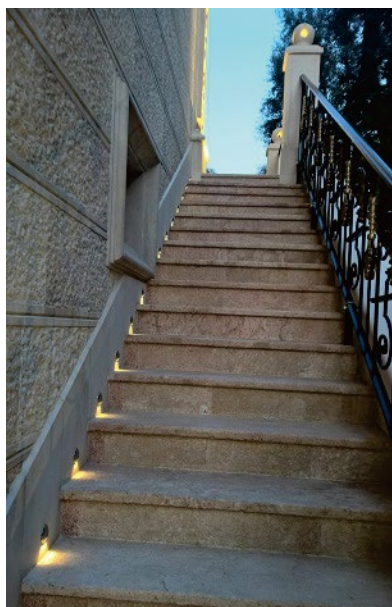
L80 / 50,000h

#### OPTICAL

direct illumination  
beam angle 15°, 25°, 40°

#### PHYSICAL

top cover: stainless steel 316  
body: anodized aluminium



### Function

A perfect marker light for in-ground or outdoor application.  
IP 67 design with integral thermal management for long life.  
High precision machining ensures perfect mechanical fit for long life.  
8 mm Tempered glass lens support 800 kg "driver over" performance,  
High reliability, maintenance free.  
Light emission: one emission, two

Light emission: one emission, two opposite emissions.  
Very low surface temperature lens can be touched without injury  
Suitable for indoor applications in bathroom, kitchens, bars when lens may be touched without injury.

### Light distribution for 3000K



EPO NANO V1 1.6W 10lm-11lm

#### Order Information

**EPO NANO V1 1 LED MODELS** (With OSRAM LED, DC-DC driver)

Code	Lumen output	Input Voltage	LED Power	System Power	CRI	CCT
<b>EPO NANO V1-30</b>	10 lm	12-24 V	1.6 W	2 W	83	3000K
<b>EPO NANO V1-40</b>	11 lm	12-24 V	1.6 W	2 W	83	4000K