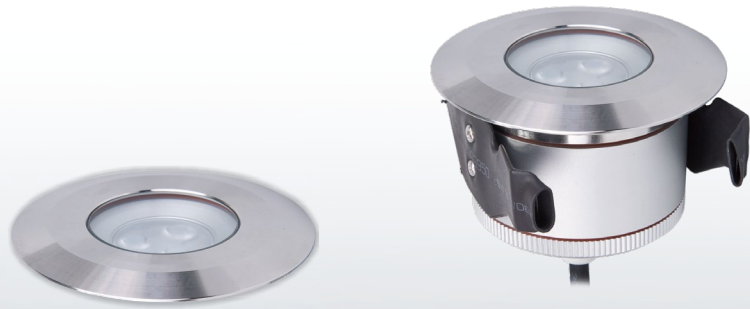
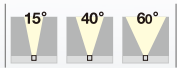


EPO / EPO Mini

Recessed Ground Light

IP 67 [5m] | 800 Kg | Input 12-24VDC | Top cover Stainless Steel 316 | CE



Quickinfo

GENERAL

underground
IP 67

LED

OSRAM LED module
2700K, 3000K, 4000K
CRI > 80, CRI > 90
Bining < 3-Step MacAdam

ESTIMATED LED LIFETIME

L80 / 50,000h

OPTICAL

direct illumination
beam angle 15°, 40°, 60°

PHYSICAL

top cover: stainless steel 316
body: anodized aluminium

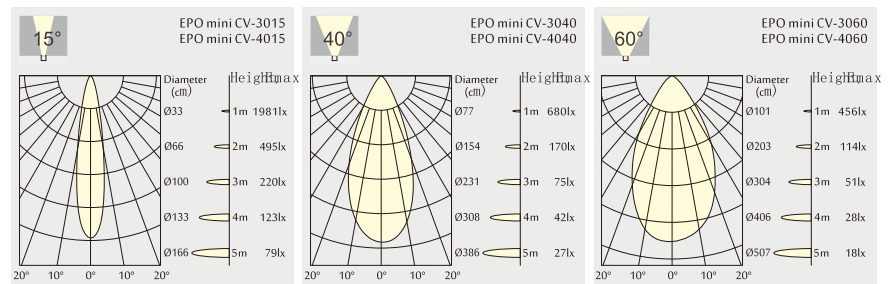
Function

Creating striking wall effect with focus beam
IP 67 design with integral thermal management for long life.
High precision machining ensures perfect mechanical fit for long life.
Stainless steel (316) front face ensures corrosion free outdoor performance in salty, damp environment.
8 mm Tempered glass lens support

8 mm Tempered glass lens support 800 kg "driver over" performance, High reliability, maintenance free
Very low surface temperature lens can be touched without injury.
Suitable for indoor applications in bathroom, kitchens, bars when lens may be touched without injury

Light distribution for 3000K

EPO MINI 4.3 W 380lm-420lm



Order Information

EPO mini 3 LED MODELS

(With OSRAM LED, DC-DC driver)

| Code | Lumen output | Input Voltage | LED Power | System Power | CRI | CCT | BEAM |
|------------------|--------------|---------------|-----------|--------------|-----|-------|------|
| EPO mini CV-3015 | 380 lm | 12-24 V | 4,3 W | 4,8 W | 83 | 3000K | 15° |
| EPO mini CV-4015 | 420 lm | 12-24 V | 4,3 W | 4,8 W | 83 | 4000K | 15° |
| EPO mini CV-3040 | 380 lm | 12-24 V | 4,3 W | 4,8 W | 83 | 3000K | 40° |
| EPO mini CV-4040 | 420 lm | 12-24 V | 4,3 W | 4,8 W | 83 | 4000K | 40° |
| EPO mini CV-3060 | 380 lm | 12-24 V | 4,3 W | 4,8 W | 83 | 3000K | 60° |
| EPO mini CV-4060 | 420 lm | 12-24 V | 4,3 W | 4,8 W | 83 | 4000K | 60° |