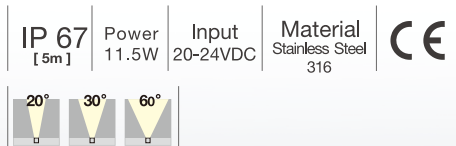


EOS / EOS Maxi S316

Stainless Steel 316 Version



Quickinfo

GENERAL

projector
IP 67

LED

OSRAM LED module
2700K, 3000K, 4000K
CRI > 80, CRI > 90
Bining < 3-Step MacAdam

ESTIMATED LED LIFETIME

L80 / 50,000h

OPTICAL

direct illumination
beam angle 20°, 30°, 60°

PHYSICAL

housing: stainless steel 316

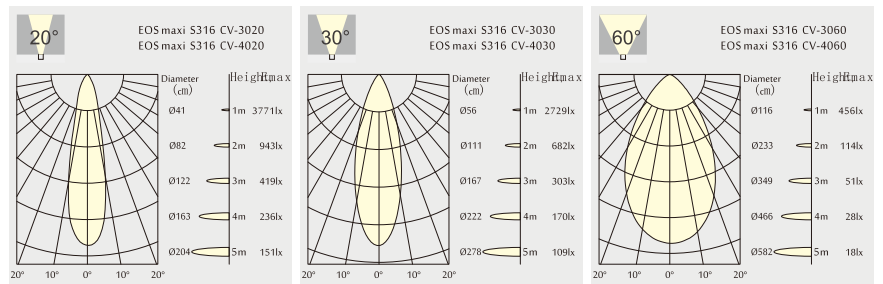
Function

High power projector for architectural grade accent lighting effect.
IP 67 design with integral thermal management for long life.
High precision machining ensures perfect mechanical fit for long life.
The whole fixture is made of stainless steel(316),ensures corrosion free outdoor

The whole fixture is made of stainless steel(316),ensures corrosion free outdoor performance in salty,damp enviornment, especially suitable for outdoor lighting.
Optional stake mounting offers easy installation and tool free repositioning.

Light distribution for 3000K

EOS Maxi S316 11 W 1000lm-1100lm



Order Information

EOS maxi S316 7 LED MODELS (With OSRAM LED, DC-DC driver)

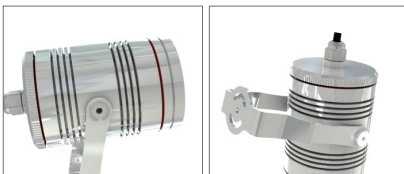
Code	Lumen output	Input Voltage	LED Power	System Power	CRI	CCT	BEAM
EOS maxi S316 CV-3020	1000 lm	24 V	11 W	11.5 W	83	3000K	20°
EOS maxi S316 CV-4020	1100 lm	24 V	11 W	11.5 W	83	4000K	20°
EOS maxi S316 CV-3030	1000 lm	24 V	11 W	11.5 W	83	3000K	30°
EOS maxi S316 CV-4030	1100 lm	24 V	11 W	11.5 W	83	4000K	30°
EOS maxi S316 CV-3060	1000 lm	24 V	11 W	11.5 W	83	3000K	60°
EOS maxi S316 CV-4060	1100 lm	24 V	11 W	11.5 W	83	4000K	60°

EOS Maxi CV Outdoor Projector Light Series
External 24VDC LED driver is required
Non-Dimmable
Dimmable version with DMX controller is optional
Lumen output: 1000-1100lm



Efficiency: 87 lm/W
Life time: 50,000 hours (70% Lumen maintenance)
3 Years Guarantee

Features



Body: Stainless steel 316
Glass: tempered glass