

DORI/DORI Mini

Recessed Ground Light



DORI MINI V2

Quickinfo

GENERAL

underground
IP 67

LED

CITIZEN LED module
2700K, 3000K, 4000K
CRI > 80, CRI > 90
Bining < 3-Step MacAdam

ESTIMATED LED LIFETIME

L80 / 50,000h

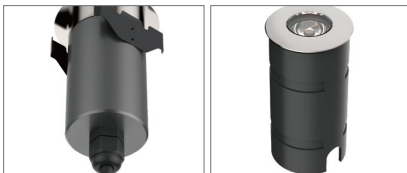
OPTICAL

direct illumination
beam angle 30°, 45°

PHYSICAL

top cover: stainless steel 316
body: anodized aluminium

Features



Body: Anodized Aluminium
Glass: tempered glass

Function

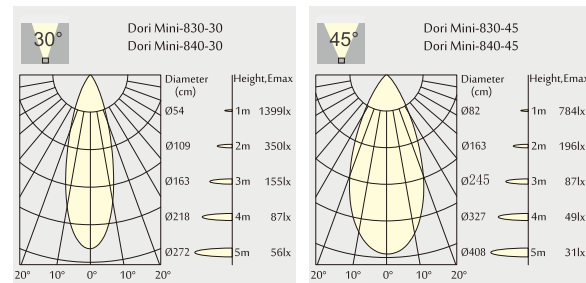
A perfect marker light for in-ground or outdoor application.
IP 67 design with integral thermal management for long life.
High precision machining ensures perfect mechanical fit for long life.
8 mm Tempered glass lens support 800 kg "driver over" performance,
High reliability, maintenance free.
Light emission: one emission, two

Light emission: one emission, two opposite emissions.
Very low surface temperature lens can be touched without injury
Suitable for indoor applications in bathroom, kitchens, bars when lens may be touched without injury.

Light distribution for 3000K



5.5W 500 lm-550 lm



Order Information

Dori Mini 500-550Lm MODELS		(With CITIZEN LED,DC-DC Driver)					
Code	Module output	Input Voltage	LED Power	System Power	CRI	CCT	BEAM
Dori Mini-830-30	500 lm	24 V	5W	5.5 W	83	3000K	30°
Dori Mini-840-30	550 lm	24 V	5W	5.5 W	83	4000K	30°
Dori Mini-830-45	500 lm	24 V	5W	5.5 W	83	3000K	45°
Dori Mini-840-45	550 lm	24 V	5W	5.5 W	83	4000K	45°